



WESTLAKE

Project: _____

Model: _____ Series #: _____

Dealer: _____ Quantity#: _____

Delivery address: _____ Date: _____

Top Mounted Series Reach in Solid door

Model#WK-48F(Freezer)



Features

- Precision ventilated refrigeration system keeps food at safe temperature
- Electronic control system make it easy to adjust temperature set point and defrost frequency
- Self closing door with 90 degree stay open feature,locks and keys included
- Preinstalled heavy duty casters with brakes
- Top installation board makes it easy to access condenser coil for cleaning and service
- Stainless steel exterior and interior, ensure longer life
- Top LED light,goes on when door open, goes off when door closed
- Anti-corrosion coated copper coil evaporator ensure 10 years life of westlake products
- 6 epoxy coated steel wire shelves, 90 lbs loading capacity each
- R290 hydro carbon refrigerant that has zero(0) ozone depletion potential(ODP) & three(3) global warming potential(GWP)

WARRANTY:

- 2 Years Parts and Labor
- 6 Years compressor (Additional 4 years parts only)
- westlake is responsible for components failure. but is not responsible for improper operation failure and artificial damage.





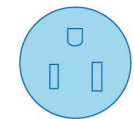
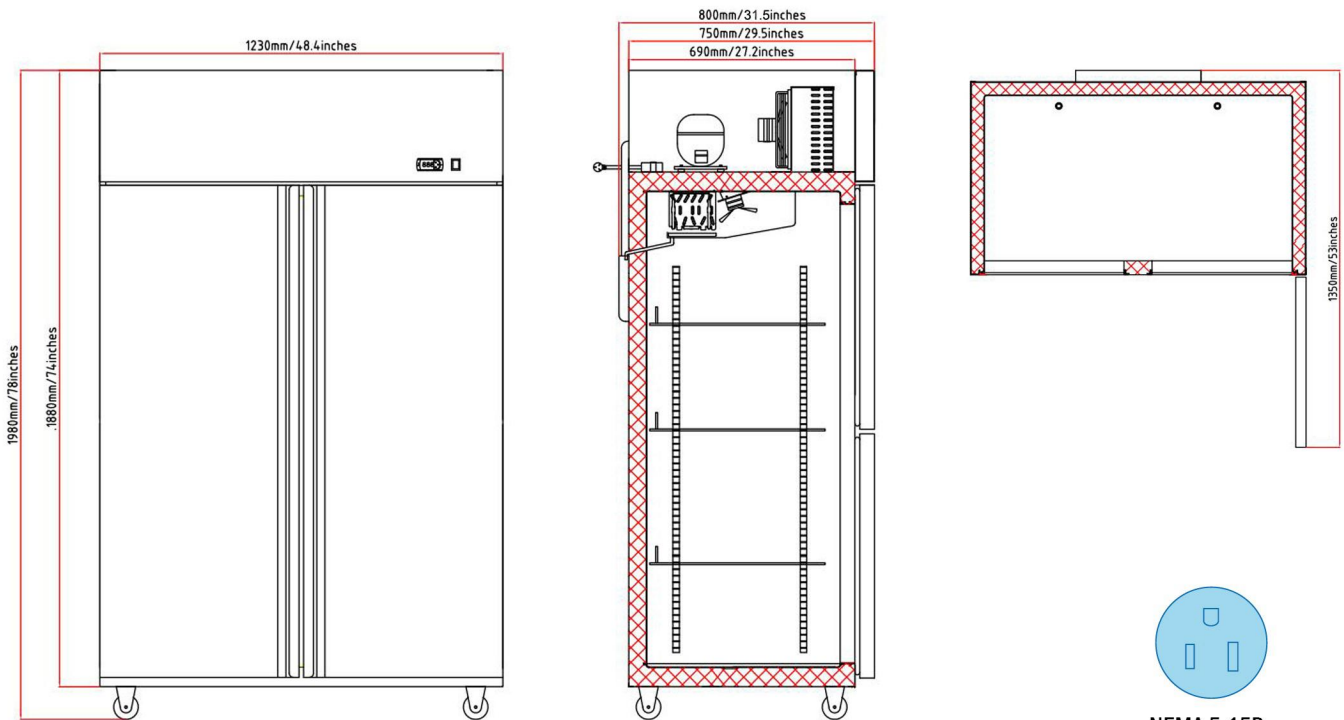
Top Mounted Series Reach in Solid door

Model# WK-48F(Freezer)

TECHNICAL DATA

Model #	WK-48F
Temperature range	-8~0°F
Refrigerant	R290
Max Ambient Temperature	100°F
Defrosting	automatic every 4 hours
Horsepower	3/4P
Exterior Dimension	48.4*31.5*78
Interior Dimension	43.7*25*55
Gross Weight	379lbs
Net Weight	299lbs
Packing Dimension	50*32.3*79.1
Voltage/Phase/Hz	115V/1/60Hz
Amps	5.2
Plug Type	NEMA 5-15P
Electrical Cord Length	70.8

PLAN VIEW



NEMA 5-15P