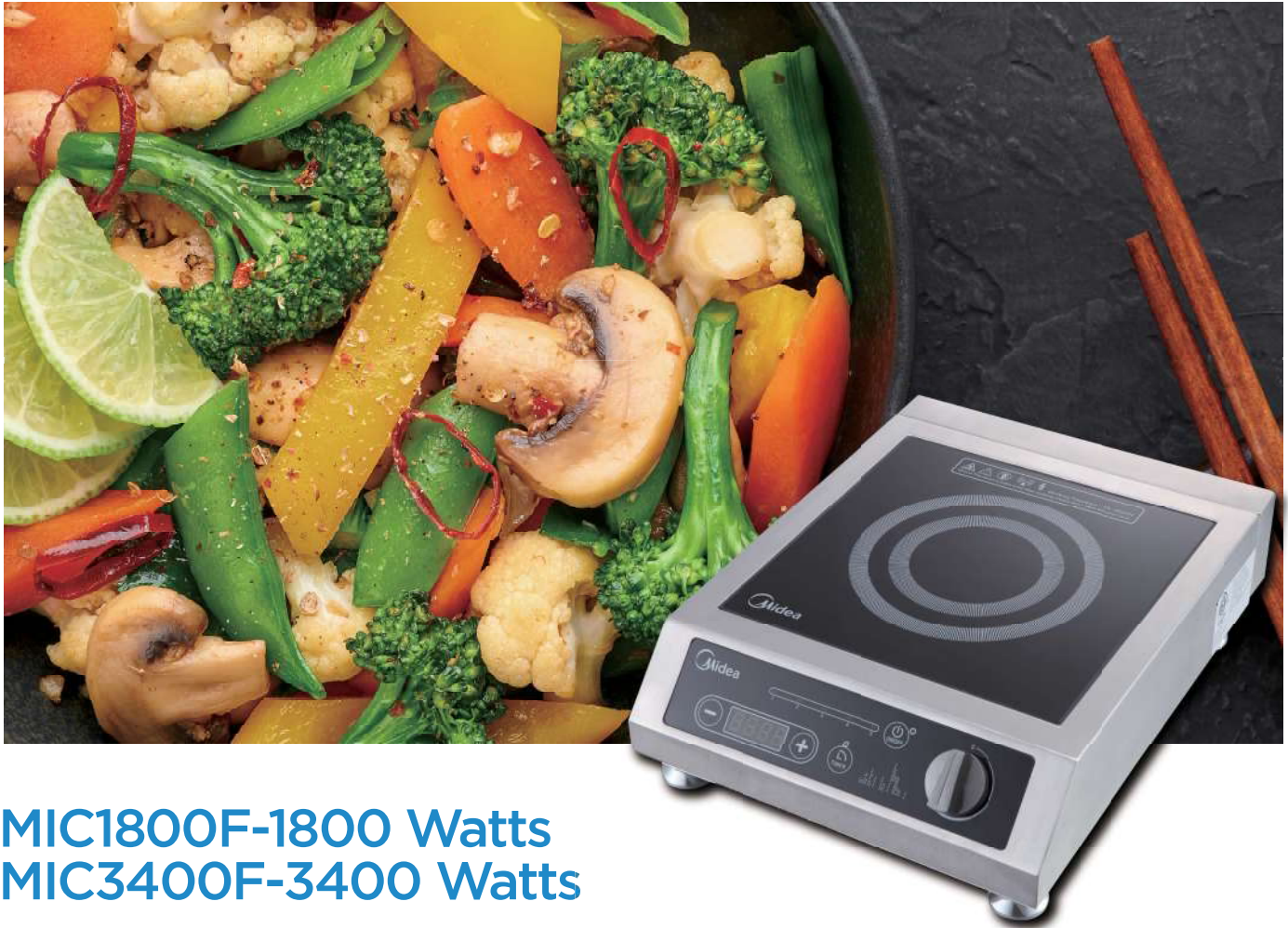


Project #: _____

Item #: _____



MIDEA COMMERCIAL INDUCTION COOKTOPS



MIC1800F-1800 Watts
MIC3400F-3400 Watts

MAIN FEATURES:

- + Compact table top design with seamless stainless steel body.
- + Slip-resistant metal feet.
- + Easy to see front panel with adjustable control for easy operation.
- + Dial control with 5 power levels and 24-hours timer.
- + Sealed touch control provides consistent quality and makes cleaning easier.
- + 5 cooling fans keep electronics cool.
- + DC Silent Fans provide a comfortable cooking environment.
- + 90% energy efficiency rating.
- + Protective air deflector prevents hot exhaust and liquids from being pulled back into unit.
- + Thermostatically controlled overheat sensor shuts the unit off to prevent damage to pans and overheating.
- + Induction technology transfers heat to the pan, not to the surrounding air, allowing for cool operation.
- + No pan, no heat.
- + IPX3 water proof design.
- + Sealed motherboard protects against damage.

REX OU

Head of Midea Commercial Kitchen Sales Department
Address: No.6, Yong An Road, Beijiao, Shunde, Foshan, Guangdong, 528311, P.R.China
Mobile: +86 13924846338
Wechat/QQ: RE19901010
Email: shihaou@midea.com

GINO IACOVELLA

Director of Midea Commercial Kitchen
Address: 300 Kimball Drive, Parsippany, NJ 07054
Mobile: +1 973-262-9171

Project #: _____

Item #: _____



MIC1800F-1800 Watts

MIC3400F-3400 Watts

DESCRIPTION:

Commercial induction cooktop from Midea shall have compact table top design with stainless steel body, metal feet with slide-proof mat and IPX3 water proof design. Protective air deflector shall prevent hot exhaust and liquids from being pulled back into unit. This unit shall be considered as user-friendly design. Sloped and easy to see front panel with touch control for easy operation. Dial control with 5 power levels and 24-hours timer shall fit any commercial demand. This unit shall be considered as "heavy duty" design, which is combined by five DC silent cooling fans, glue filling mainboard and PCB and thermostatically controlled overheat sensor.

SPECIFICATIONS:

- + Max pan size: 260 mm (10.2")
- + Power output: 1800 / 3400 Watts
- + Voltage: 120 V / 240 V - 60 Hz
- + Amps: 15/14.6 Amps
- + Phase: 1
- + Control type: Thermostatic
- + Burners: Single
- + Water proof: IPX3
- + Unit(W x D x H, mm): 360 x 450 x 129 (14.2" x 17.7" x 5.1")
- + Package(W x D x H, mm): 455 x 205 x 532 (17.9" x 8.1" x 20.9")
- + Exterior finish: Seamless stainless steel
- + Power Type: Electric
- + Power Levels: 5
- + Type: Induction Ranges
- + Usage: Front and back of house
- + Installation type: Counter top
- + Safety Listing: ETL + ETC sanitation + FCC
- + Plug Type: NEMA 5-15P / NEMA 6-20P
- + Net weight (approx.): 7 kg (15.4 Lbs)
- + Gross weight (approx.): 9 kg (19.8 Lbs)
- + Loading(20/40/40'HD'): 544 / 1108 / 1370

INSTALLATION AND DIMENSIONS:

