

# Marine Model Ice Cube Machine

## Models

- IDT0750WM     IDT0900WM  
 IYT0900WM



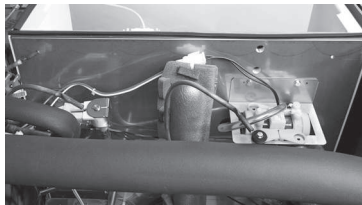
Model shown-  
IDT0750WM



Model shown-  
IDT0900WM

### Stainless Steel:

- Top Cover
- Side Panels
- Back Panel
- Bulkhead
- Brackets
- Fasteners



Stainless Steel Bulkhead



Isolation switch

Six ice machine models to choose from with special Marine specifications. Choose series 600 and 900 water-cooled models. Ice production from 661 to 879 lbs (300 to 399 kg) of ice per day.

- **Isolation switch** immediately cuts power to the entire unit.
- **Indigo<sup>®</sup>NXT feature set** including automatic cleaning that returns to the ice making process without manual intervention.
- **Cupra-nickel condenser** adds protection from salt water.
- **Completely sealed unit:** front, back, top and sides.
- Meets **USPHS** specifications.
- All exterior panels made from **High Grade Stainless Steel**.
- Check current price list for available ice type and electrical options.



### Need a Marine Bin?

Please contact the Manitowoc Ice sales department for details.



Model Shown  
IBW-M4 Marine Bin

### Ice Shape

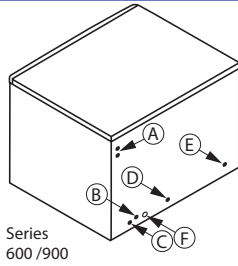


**Half Dice**  
 $\frac{3}{8}$ " x  $1\frac{1}{8}$ " x  $\frac{7}{8}$ "  
 (0.95 x 2.86 x 2.22 cm)



**Dice**  
 $\frac{7}{8}$ " x  $\frac{7}{8}$ " x  $\frac{7}{8}$ "  
 (2.22 x 2.22 x 2.22 cm)





- Ⓐ Electrical Entrance (2) Options
- Ⓑ 3/8" (0.95 cm) F.P.T. Ice Making Water Inlet
- Ⓒ 1/2" (1.27 cm) F.P.T. Ice Making Water Drain
- Ⓓ 1/2" (1.27 cm) F.P.T. Water Condenser Outlet
- Ⓔ 3/8" (0.95 cm) F.P.T. Water Condenser Inlet
- Ⓕ 1/2" (1.27 cm) Auxiliary Base Drain Socket

Installation Note: Minimum 2-3/4" clearance at back.

## Series iT0750W & iT0900W Operating Limits

- Ambient Temperature Range: 40° to 110°F (4.4° to 43.3°C)
- Water Temperature Range: Potable Water: 40° to 90°F (4.4° to 32.3°C)
- Water Pressure Ice Maker Water In: Min. 20 psi (137.9 kPa), Max. 80 psi (551.1 kPa)
- Condenser Inlet Water In: Min. 20 psi (137.9 kPa), Max. 150 psi (1,034.2 kPa)

## Machine Ice Types & Electrical Options

<b>iT0750WM</b>	
Dice Cube	261 only
<b>iT0900WM</b>	
Dice Cube	261
Half Dice Cube	261, 263

Series iT0750WM
21.50" H x 30.00" W x 24.50" D
54.6 cm x 76.2 cm x 62.2 cm
Order ice storage bin separately. Note: Placing iT0750W ice machine on non-Manitowoc Ice bin or "F" model Manitowoc Ice bin, requires installation of ice deflector K-00347.

Electric: 208-230/60/1 standard.  
 Min. circuit ampacity: 7.9  
 Max. fuse size: 15 amps  
 BTU Per Hour:  
 12,800 (average) 13,900 (peak)

Series iT0900WM
26.50" H x 30.00" W x 24.50" D
67.3 cm x 76.2 cm x 62.2 cm
Order ice storage bin separately. to order 3 phase use 263 or 463 depending on voltage required. Note: Placing iT0900W ice machine on non-Manitowoc Ice bin or "F" model Manitowoc Ice bin, requires installation of ice deflector K-00347.

Electric: 208-230/60/1 standard. (208-230/60/3)  
 Min. circuit ampacity:  
 8.8 - 1ph  
 Max. fuse size:  
 15 amps - 1ph  
 BTU Per Hour:  
 12,700 (average) 14,800 (peak)

## Specifications

Model	Ice Shape	Ice Production 24 Hours		Power Usage kWh/100 lbs. @ 32° Air/21° C water 90° Air/70° F water	Potable Water Usage/100 lbs. 45.4 kgs. of Ice
		70° Air/ 50° F Water 21° Air/10° C Water	90° Air/ 70° F Water 32° Air/21° C water		
IDT0750WM	dice	703 lbs.	600 lbs.	1 Ph	20 Gal.
		319 kgs	272 kgs		
IDT0900WM	dice	780 lbs.	665 lbs.	4.07	75.7 L
		354 kgs	302 kgs		
IYT0900WM	half-dice	722 lbs.	665 lbs.	4.02	19 Gal.
		327 kgs	302 kgs		

Water-cooled Condenser water usage 100lbs/45.4kg of Ice: iT0750 and iT0900 135 gal / 511 L

*This product is hermetically sealed and contains fluorinated greenhouse gas R410a.*

**LuminIce® II Growth Inhibitor**  
 reduces yeast and bacteria growth for a cleaner ice machine.



**Arctic Pure® Water Filters**  
 Reduces sediment and chlorine odors for better tasting ice.



Welbilt reserves the right to make changes to the design or specifications without prior notice.