



BEVERAGE-AIR

| | |
|-----------------|------|
| Project: _____ | AIA# |
| Item: _____ | |
| Location: _____ | SIS# |
| Approved: _____ | |

BDC-HC DIPPING CABINET FREEZER

DIPPING CABINET FREEZER
 BDC-HC Dipping Cabinet 12-Flavors
 Hydrocarbon Series

MODEL:
BDC-HC-12

5 Year Parts/Labor Warranty Available
7 Year Compressor Warranty



CABINET CONSTRUCTION

- Galvanized metal cabinet with powder coated painted surface
- Interior easy to clean per-painted steel
- Adjustable thermostat
- LED lighting
- Glass lids are LowE tempered sliding glass lids with locks and keys standard
- 2" Heavy-duty casters allow easy and fast movement
- Drain plug for easy cleaning
- Lexan sneeze guard
- BDC-12 includes (6) 2- ring tub holds with space for (12) 3 gallon containers, lower level provides extra container storage of (10) 3 gallon containers
- Cold wall refrigeration system, maintains 0° to -10°F

OPTIONS & ACCESSORIES

- 3 Year parts/labor standard, additional 2 year warranty available
- Dip Well
- Two ring tub holder
- Graphics

REFRIGERATION SYSTEM

- Refrigeration system uses R290 refrigerant to comply with all environmental concerns
- The unit is best suited for an environment where temperatures remain below 75°F and humidity does not exceed 55%
- Areas with direct sunlight should also be avoided
- Triple access air flow compressor compartment
- Maintenance free condenser



Please verify qualifying units by visiting:
www.energystar.gov/cfs

3779 Champion Blvd., Winston-Salem, NC 27105
 1-888-845-9800 Fax: 1-336-245-6453
 Beverage-Air.com Sales@bevair.com



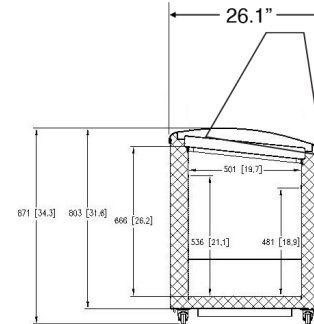
BEVERAGE-AIR

Dipping Cabinet Freezer Model: BDC-HC-12

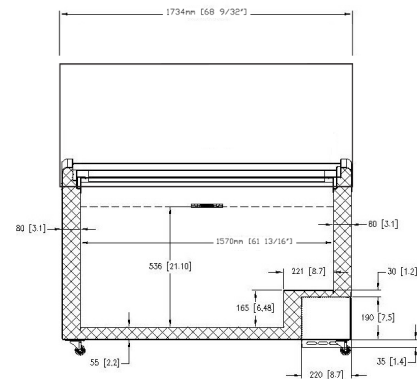
| MODEL | BDC-HC-12 |
|----------------------------------|--------------------|
| EXTERNAL DIMENSIONAL DATA | |
| Width Overall | 68 7/32" |
| Depth Overall | 26 1/16" |
| Height Overall | 52" |
| Tub Holders | 6 |
| INTERNAL DIMENSIONAL DATA | |
| NET Capacity (cubic ft.) | 20.9 |
| Capacity- Top holding area | (12) 3 Gallon tubs |
| Capacity- Bottom holding area | (10) 3 Gallon tubs |
| ELECTRICAL DATA | |
| Full Load Amperes | 5.2 |
| REFRIGERATION DATA | |
| Horsepower | 1/3+ |
| Capacity (BTU/Hr) | 1130 |
| Heat Rejection (BTU/Hr) | 1695 |
| Charge (lbs/grams) | 0.22/100 |
| WEIGHT DATA | |
| Gross Weight | 307 lbs |
| Height - Crated | 44" |
| Width - Crated | 70" |
| Depth - Crated | 28" |

Model Views

Required Clearance: 4" Sides & Rear



SIDE VIEW



ELEVATION VIEW



ELECTRICAL CONNECTION



115/60/1
NEMA 5-15P

Units pre-wired at
factory and include 6.5'
long cord and plug set.