



# BEVERAGE-AIR

|                 |      |
|-----------------|------|
| Project: _____  | AIA# |
| Item: _____     |      |
| Location: _____ | SIS# |
| Approved: _____ |      |

**BB72HC BACK BAR REFRIGERATOR: FOOD RATED/PASS-THRU**

## BAR EQUIPMENT- BACK BAR REFRIGERATOR

**MODEL:  
BB72HC-1-GS-F-PT-B**

BB72HC Sliding Glass Door Food Rated Pass-Thru Hydrocarbon Series

**5 Year Parts/Labor Warranty Available  
7 Year Compressor Warranty**



### CABINET CONSTRUCTION

- Exterior is black wear resistant vinyl on steel
- Stainless steel interior
- Full electronic control
- Galvanized sub-top standard
- Magnetic door gaskets provide positive door sealing
- Self-closing sliding glass doors have black frame regardless of finish
- Stay-open feature and locks standard
- LED lighting
- Packaged products only
- Six (6) epoxy coated wire shelves
- Certified for open food product
- Balanced, forced air refrigeration system provides rapid chilling of product

### OPTIONS & ACCESSORIES

- 3 Year parts/labor standard, additional 2 year warranty available
- 2" Stainless steel top
- Wine model (40°-60° models)
- Wire shelf divider
- Additional shelves
- Additional shelf clips
- 3" or 6" Casters
- 6" Black legs
- Remote option\* (see note on back on page)

### REFRIGERATION SYSTEM

- Uses environmentally friendly, energy efficient R290 refrigerant, and meets all regulatory requirements for CARB, SNAP, DOE & more
- Adaptive defrost
- Epoxy coated evaporator coil
- Maintains product temperature between 36°F and 38°F



Please verify qualifying units by visiting:  
[www.energystar.gov/cfs](http://www.energystar.gov/cfs)

3779 Champion Blvd., Winston-Salem, NC 27105  
1-888-845-9800 Fax: 1-336-245-6453  
Beverage-Air.com Sales@bevair.com



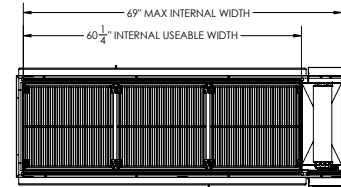
# BEVERAGE-AIR

| MODEL                            | BB72HC-1-GS-F-PT-B  |
|----------------------------------|---|
| <b>EXTERNAL DIMENSIONAL DATA</b> |   |
| Width Overall                    | 72"   |
| Depth Overall                    | 25 <sup>3</sup> / <sub>4</sub> "                                    |
| Height Overall                   | 34"   |
| Number of Doors                  | 6   |
| Door Openings (in)               | 18 <sup>1</sup> / <sub>2</sub> " x 26 <sup>1</sup> / <sub>4</sub> " |
| <b>INTERNAL DIMENSIONAL DATA</b> |   |
| NET Capacity (cubic ft.)         | 22.1  |
| Internal Width Useable (in)      | 60 <sup>1</sup> / <sub>4</sub> "                                    |
| Internal Depth Overall (in)      | 18"   |
| Internal Height Overall (in)     | 29 <sup>3</sup> / <sub>8</sub> "                                    |
| Number of Shelves                | 6   |
| Number of 1/2 Kegs               | 3   |
| <b>ELECTRICAL DATA</b>           |   |
| Full Load Amperes                | 3.1   |
| <b>REFRIGERATION DATA</b>        |   |
| Horsepower                       | 1/3   |
| Capacity (BTU/Hr)                | 1942  |
| Heat Rejection (BTU/Hr)          | 2913  |
| Charge (lbs/grams)               | 0.3086/140  |
| <b>SHIPPING DATA</b>             |   |
| Gross Weight - Crated            | 394 lbs   |
| Height - Crated                  | 43"   |
| Width - Crated                   | 75"   |
| Depth - Crated                   | 29"   |

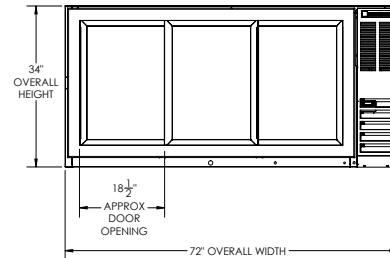
\*NOTE: Remote units are field wired and come with 6" legs.  
Refrigerant must be specified at time of order.

## Bar Equipment-Back Bar Refrigerator Model: BB72HC-1-GS-F-PT-B

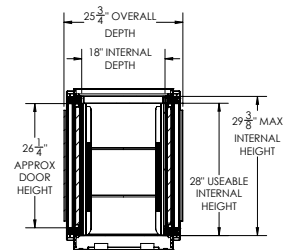
### Model Views



### PLAN VIEW



### ELEVATION VIEW



### SIDE VIEW



### ELECTRICAL CONNECTION

115/60/1  
NEMA 5-15P

Unit pre-wired at factory  
and include 8' long cord  
and plug set.