

Low Temp AFB Bakery

American Dish Service
Manufacturers of Ware Washing Equipment

The Economical Answer to Tall Warewashing Needs

Available in Corner and Pass-Through Models
27.5" door opening with safety interlock



Pass-Through



Sheet pans require a special stainless steel dishrack for proper washing.



Corner

STANDARD FEATURES

- Available in either 90, 120, or 150 second time cycle
- Uses standard 20" x 20" racks
- High pressure, 1.5 HP pump
- Built-in chemical dispensing

American Dish Service

900 Blake Street | Edwardsville, Kansas, 66111
Phone: 913.422.3700 | Toll-Free: 800.922.2178 | Fax: 913.422.6630
orders@americandish.com | americandish.com

For detailed specifications, go to
www.americandish.com

Low Temp AFB Bakery

The Economical Answer to
Tall Warewashing Needs

Standard Features

- Quality & reliability
- Effective washing & sanitizing of bakery trays and pots & pans
- Built in scrap accumulator

AFB Series Specifications

U.S. REGISTERED PATENTS

AFB Series	Family Models		
	AFB		
Rated Capacity (Racks/Hr.)	37	25	12
Wash Time (Sec.)	45	60	75
Rinse Time (Sec.)	30	45	60
Dwell (Sec.)	15	15	15
Total Cycle Time (Sec.)	90	120	150
Water Temperature (Supply)	130 F Min. (54.4° C Min)		
Water Consumption (Per Cycle)	2.5 Gal. (9.5 Liter)		
Motor	1.5 HP (1.125 Kw)		
Electrical Ratings	115 Volts (Single Phase)		

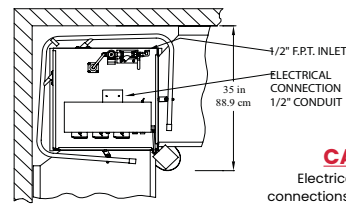
Connect to Supply Sources using 10-12 AWG copper wires on a clean circuit. Circuit Protection: 20 AMP Circuit Breaker or Fuse with a 20 AMP Rating.

Rack Size	19.75" x 19.75"	(50.2 cm x 50.2 cm)
Door Clearance	27.5" x 20.5"	(69.9 cm x 52.1 cm)
Water Inlet	0.5" FPT	
Drain (Scrap Trap)	2.0" Pipe	
Height (Door Open)94"	(238.8 cm)
Height (Door Closed)	78.5"	(199.4 cm)
Width (Overall)	33.5"	(85.1 cm)
Width (Table to Table)	25"	(63.5 cm)
Depth (Overall)	35"	(88.9 cm)
Shipping Weight	330 lb.	(133.8 kg)
Shipping Dimensions36" L x 36" W x 86" H	64.5 cu. ft (1.83 cu meters)



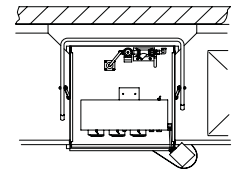
A complete warewashing center in only 121" of floor space. The soil dishtable incorporates three 20" x 20" x 14" deep sinks.

(Longer lengths available)



TOP VIEW

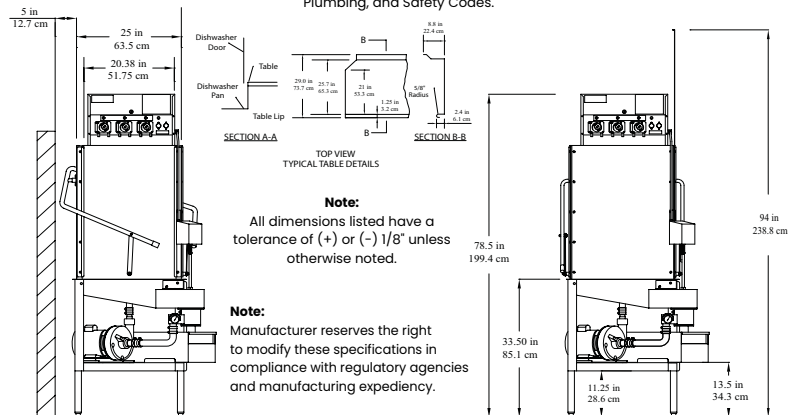
Corner Application



TOP VIEW

Inline Application

CAUTION:
Electrical and Plumbing connections must be made by a qualified Service Person who will comply with all available federal, state, and local Health, Electrical, Plumbing, and Safety Codes.



SIDE VIEW

Corner Application

FRONT VIEW

Inline Application

Note:
All dimensions listed have a tolerance of (+) or (-) 1/8" unless otherwise noted.

Note:
Manufacturer reserves the right to modify these specifications in compliance with regulatory agencies and manufacturing expediency.

Effective 2/2023



Warning: Cancer and Reproductive Harm - www.P65Warnings.ca.gov



American Dish Service
Manufacturers of Ware Washing Equipment

an Ali Group Company



The Spirit of Excellence

American Dish Service

900 Blake Street | Edwardsville, Kansas, 66111
913.422.3700 | Toll-Free: 800.922.2178 | Fax: 913.422.6630
orders@americandish.com | americandish.com